



Sound attenuation

Closed circuit cooling towers

Engineering data

REMARK: Do not use for construction. Refer to factory certified dimensions & weights. This page includes data current at the time of publication, which should be reconfirmed at the time of purchase. In the interest of product improvement, specifications, weights and dimensions are subject to change without notice.

General notes

1. Operating weight is for the tower with the water level in the cold water basin at the overflow.
2. The actual size and number of inlet and outlet connections may vary with the design flow rate. Consult unit print for dimensions.
3. Inlet and outlet connections are beveled for welding.
4. Standard make up, drain and overflow connections are located at the bottom of the unit.
5. Models shipped with an optional gear drive may have heights up to 130 mm greater than shown. Models with fan motor up to 22 kW are belt driven only; models with motor between 22 kW and 45 kW have standard belt drive but gear drive as an option; models with 55 kW motor have gear drive only. Motor size for specific model is indicated by a letter "x" at the end of the model name. Fan type is indicated by an additional letter "y" at the end of the model name. "L" refers to the standard Low Noise Fan; "W" refers to the Whisper Quiet fan.
6. FXVT models will be shipped in four sections: 1 x lower, 1 x fan and 2 x coil sections. Weight is shown for one coil section.

[FXVT cooling tower performance at standard conditions - 30% EG](#)

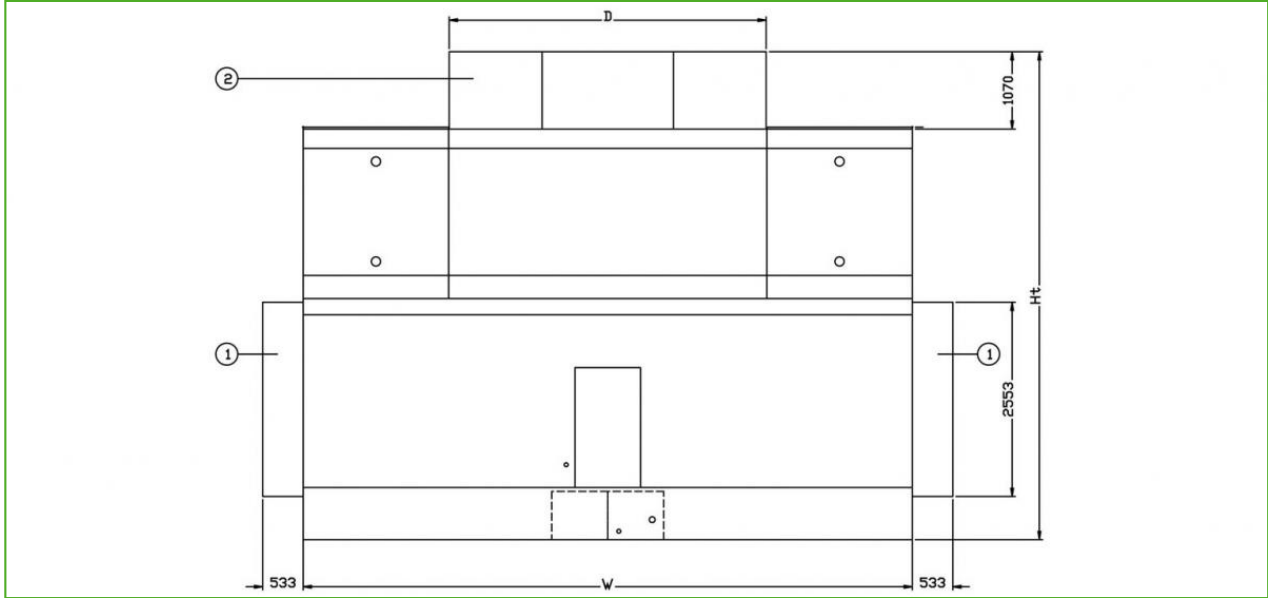
[FXVT cooling tower performance at standard conditions - 30% PG](#)

[FXVT cooling tower performance at standard conditions - water](#)

[FXVT cooling tower - pressure drop](#)

Last update: 01/09/2022

Sound attenuation



1. Inlet attenuator; 2. Discharge attenuator.



Model	Dimensions (mm)		Weights (kg)	
	D	Ht	Intake	Discharge
FXVT 288-3ML	3500	5665	685	477
FXVT 288-3NL	3500	5665	685	477
FXVT 288-3OL	3500	5665	685	477
FXVT 288-3PL	3500	5665	685	477
FXVT 288-3QL	3500	5665	685	477
FXVT 288-3RL	3500	5665	685	477
FXVT 288-4ML	3500	5665	685	477
FXVT 288-4NL	3500	5665	685	477
FXVT 288-4OL	3500	5665	685	477
FXVT 288-4PL	3500	5665	685	477
FXVT 288-4QL	3500	5665	685	477
FXVT 288-4RL	3500	5665	685	477
FXVT 288-QML	3500	5665	685	477
FXVT 288-QNL	3500	5665	685	477
FXVT 288-QOL	3500	5665	685	477
FXVT 288-QPL	3500	5665	685	477
FXVT 288-QQL	3500	5665	685	477
FXVT 288-QRL	3500	5665	685	477
FXVT 364-3NL	4185	5685	808	563
FXVT 364-3OL	4185	5685	808	563
FXVT 364-3PL	4185	5685	808	563
FXVT 364-3QL	4185	5685	808	563
FXVT 364-3RL	4185	5685	808	563
FXVT 364-3SL	4185	5685	808	563
FXVT 364-4NL	4185	5685	808	563
FXVT 364-4OL	4185	5685	808	563
FXVT 364-4PL	4185	5685	808	563
FXVT 364-4QL	4185	5685	808	563
FXVT 364-4RL	4185	5685	808	563
FXVT 364-4SL	4185	5685	808	563
FXVT 364-QNL	4185	5685	808	563
FXVT 364-QOL	4185	5685	808	563
FXVT 364-QPL	4185	5685	808	563
FXVT 364-QQL	4185	5685	808	563
FXVT 364-QRL	4185	5685	808	563
FXVT 364-QSL	4185	5685	808	563