

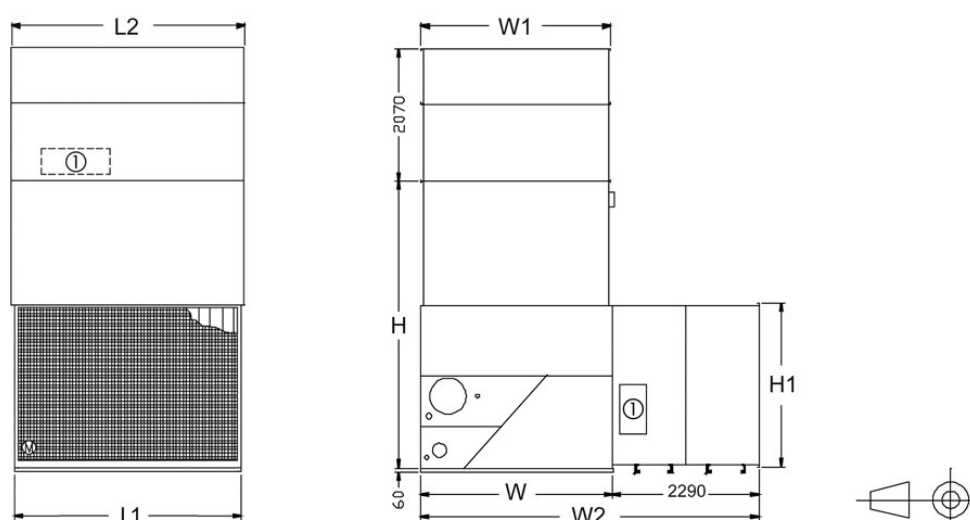
# Sound attenuation XC

Previous generation products

Dati tecnici

Ultimo aggiornamento 05/02/2025

## Sound attenuation XC



1. Access door; L & W & H: unit dimensions (see Engineering Data).

Model	Unit + Atten # pieces shipped	# Access Doors		Dimensions (mm)					Weights (kg)			
		Discharge	Intake	W2	H	W	L	L2	Intake	Solid Bottom	Discharge	Total
10 - 25	3	1	2	N.A.	1090	1030	890	902	N.A.	30	N.A.	N.A.
30 - 55	3 <sup>(1)</sup>	1	2	N.A.	1090	1030	1800	1816	N.A.	50	N.A.	N.A.
65 - 85	3 <sup>(1)</sup>	1	2	N.A.	1030	1030	2710	2731	N.A.	70	N.A.	N.A.
95 - 135	4 <sup>(2)</sup>	1	2	N.A.	1090	1030	3635	3645	830	100	N.A.	N.A.
150 - 185	4	1	2	3728	1600	1420	3635	3645	1080	120	1070	2270
N215 - N265	4	1	2	4687	2070	1955	3525	3645	1420	190	1330	2940
N310 - N395	4	2	2	4687	2070	1955	5365	5480	1970	300	1980	4250
N430 - N535	7	2	2	4687	2070	1955	7185	7320	2840	380	2660	5880
C215 - C265	4	1	2	4535	2070	1955	3525	3645	1420	190	1330	2940
C310 - C395	4	2	2	4535	2070	1955	5365	5480	1970	300	1980	4250
C430 - C535	7	2	2	4535	2070	1955	7185	7320	2840	380	2660	5880
S220 - S320	4	1	2	4687	2070	2365	3550	3645	1420	190	1640	3250
S345 - S470	4	2	2	4687	2070	2365	5385	5480	1970	300	2240	4510
S530 - S640	7	2	2	4687	2070	2365	7200	7322	2840	380	3280	6500
S690 - S940	7	4	2	4687	2070	2365	10885	10998	3940	600	4480	9020
315 - 400	4	2	2	5290	2560	2965	3510	3645	1620	230	1820	3670
470 - 600	4	2	2	5290	2560	2965	5365	5480	2240	350	2490	5080
630 - 800	7	4	2	5290	2560	2965	7185	7320	3240	460	3640	7340
870 - 1200	10	3	3	5290	2560	2965	10865	10995	4860	690	5460	11010